

Video Recording Link

# MODULE 7 L05

# Lower Respiratory Tracts

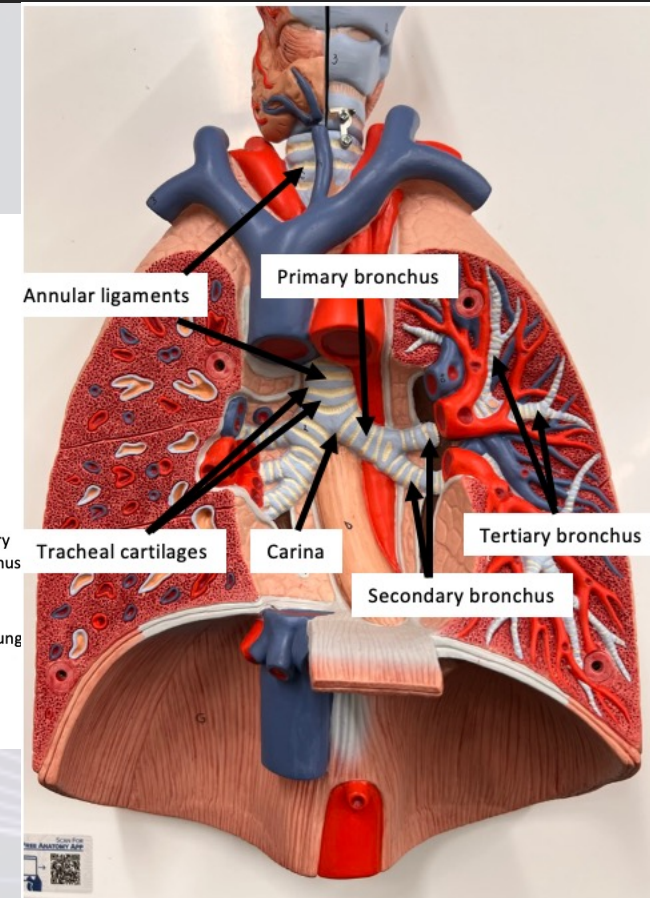
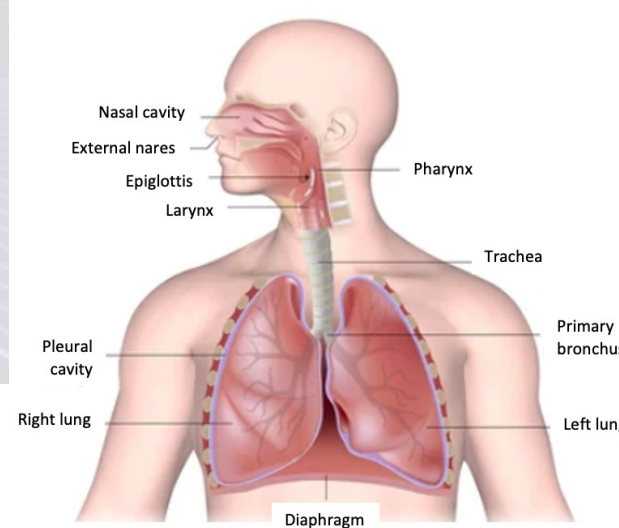
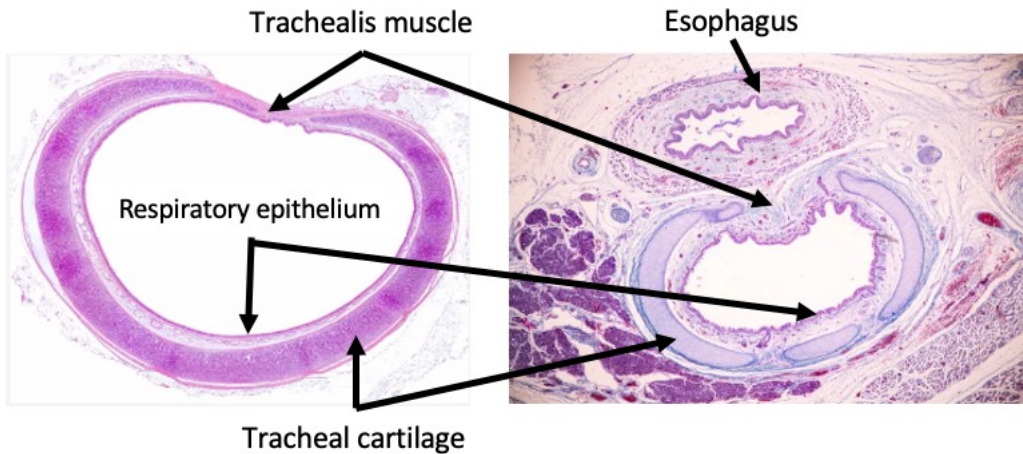
Dr. Lisa Brinn

[lbrinn@fiu.edu](mailto:lbrinn@fiu.edu)



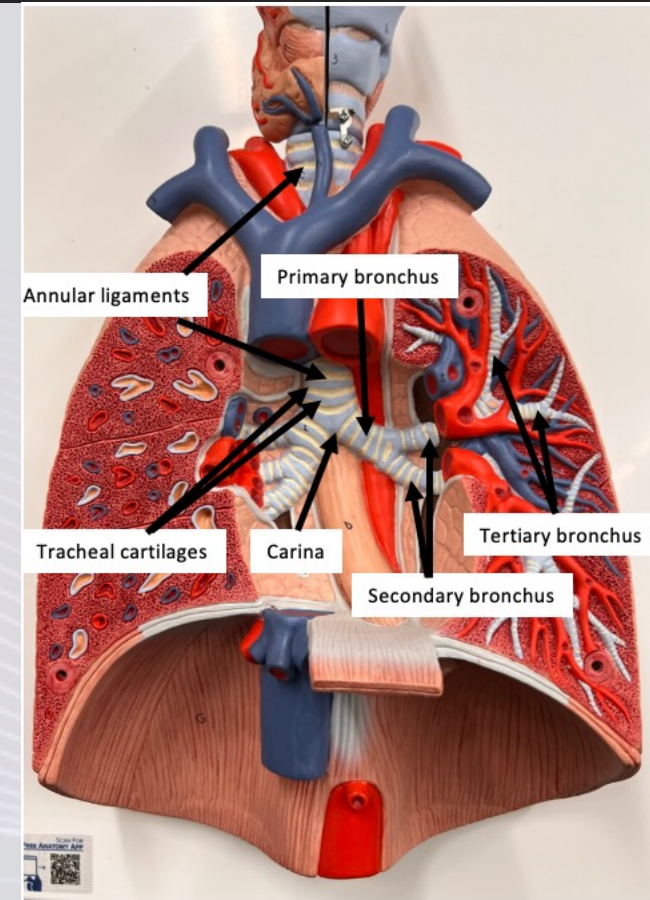
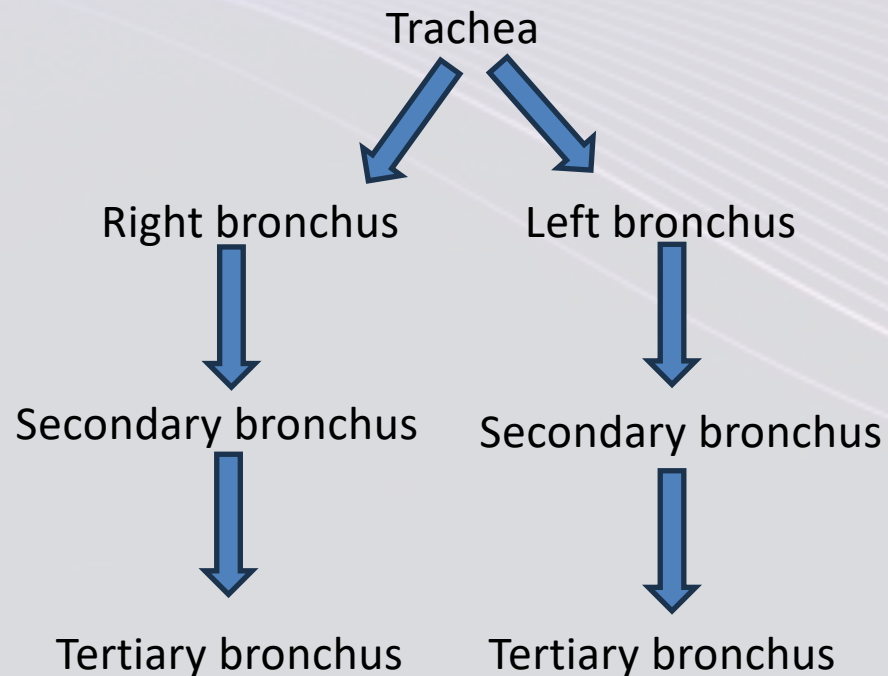
# 5. Trachea

- Also known as windpipe
- Contains 15-20 tracheal cartilages
  - ❖ Each is bound by annular ligaments
  - ❖ C-shaped



# Bronchi

- Carina
  - ❖ Internal ridge between right and left bronchi
    - Right is larger in diameter than left





# Lungs

- Right lung
  - ❖ 3 lobes (superior, middle, inferior)
  - ❖ 2 fissures (oblique and horizontal)
- Left lung
  - ❖ 2 lobes (superior and inferior)
  - ❖ 1 fissure (oblique)

